

# Enfield's Blue & Green Strategy

Valuing our parks, open spaces, trees & waterways

Presentation to Environment Forum

Wednesday 25 November  
Philip Wadsworth  
Infrastructure Delivery Manager





# Why are we preparing a strategy?

- Update to Parks & Open Spaces Strategy (ends this year 2020) & Biodiversity Action Plan
- Covid-19 & climate change emergency response
- Use spaces to support community groups (e.g. friends of parks) & events (e.g. festivals)
- Growth & cultural agenda (e.g. evidence to support new Local Plan, Cultural Strategy & Heritage Strategy)
- Multi-functional benefits (e.g. health & well-being)

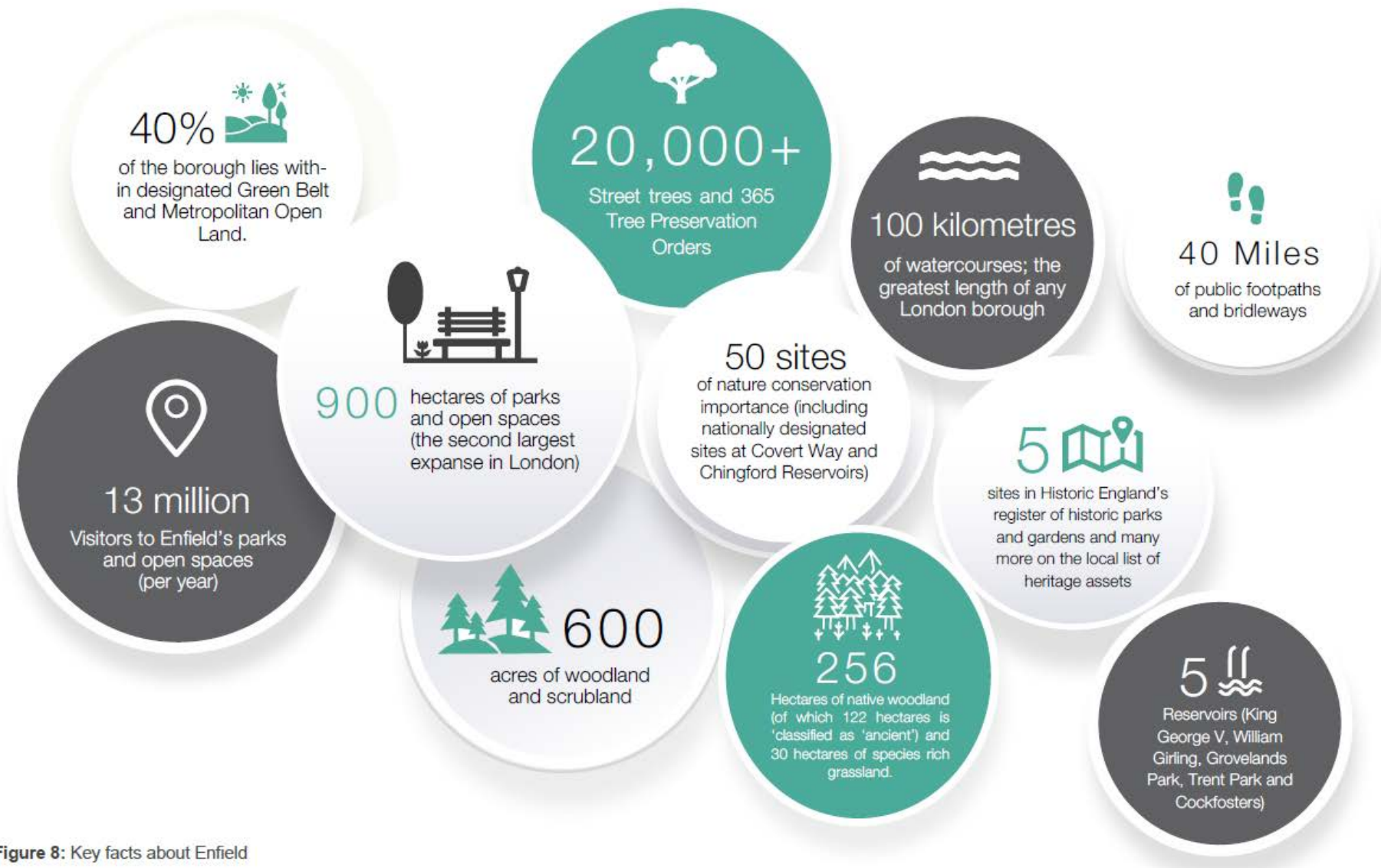


Figure 8: Key facts about Enfield



**2019 Elrow Town Festival  
25,000 attendees in Trent Park**



# Structure & content

## Part 1: Strategy

- *Long term vision*
- *Aims & objectives*
- *Corridors of opportunity*
- *Strategic priorities & projects*
- *Delivery & implementation*

## Part 2: Standards & requirements

- *Assessment of parks & open spaces*
- *Condition / status of wildlife sites & waterbodies*
- *Open space & accessibility standards*

## Part 3: Action plan

- *Meet service & operational requirements (e.g. management & maintenance)*
- *Theme-based actions & targets*
- *Promote local ownership*

# Overall strategy



**Long term vision:** We will become greenest borough in London at the heart of the national park

**Spatial framework:** Corridors, nodes, spokes & hubs of the network

**Strategic projects & programmes** to create a more integrated, multi-functional network (e.g. Enfield Chase, Green Loop & improved links to Lee Valley Regional Park)

**Delivery & implementation**

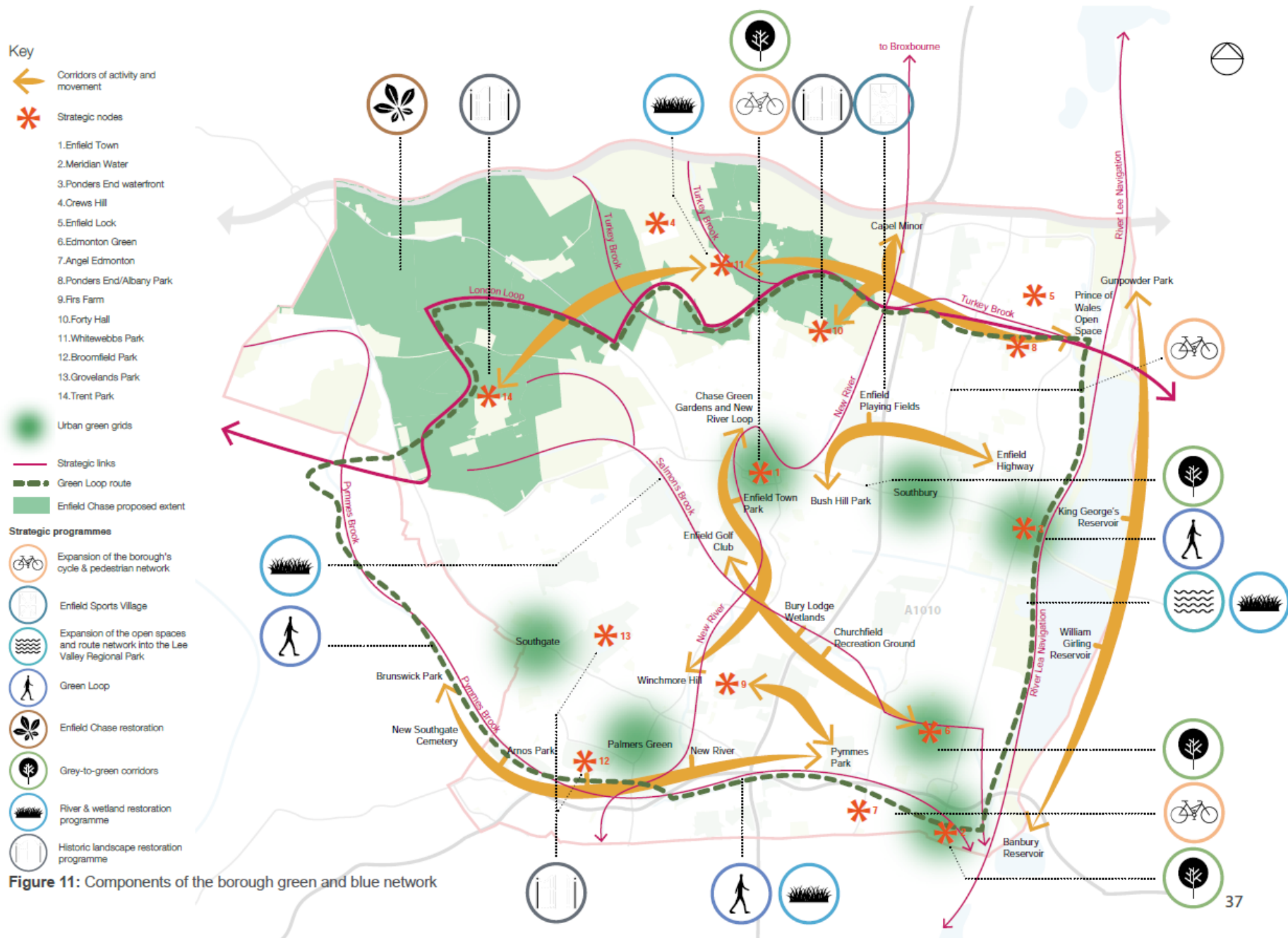
External & internal partnerships (e.g. friends of parks)

Community action & event planning (e.g. events policy)



Figure 1: Shared vision and aims

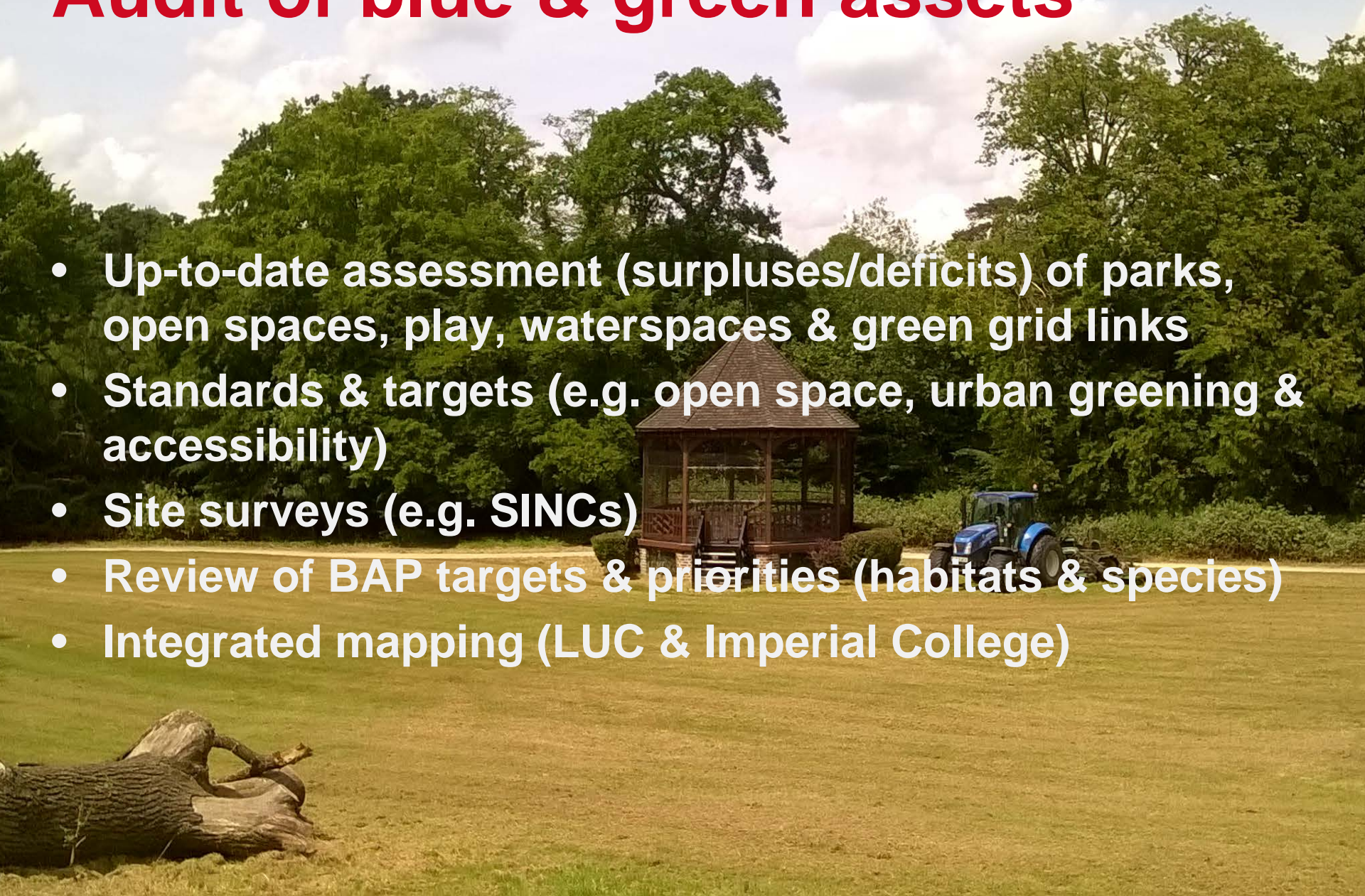




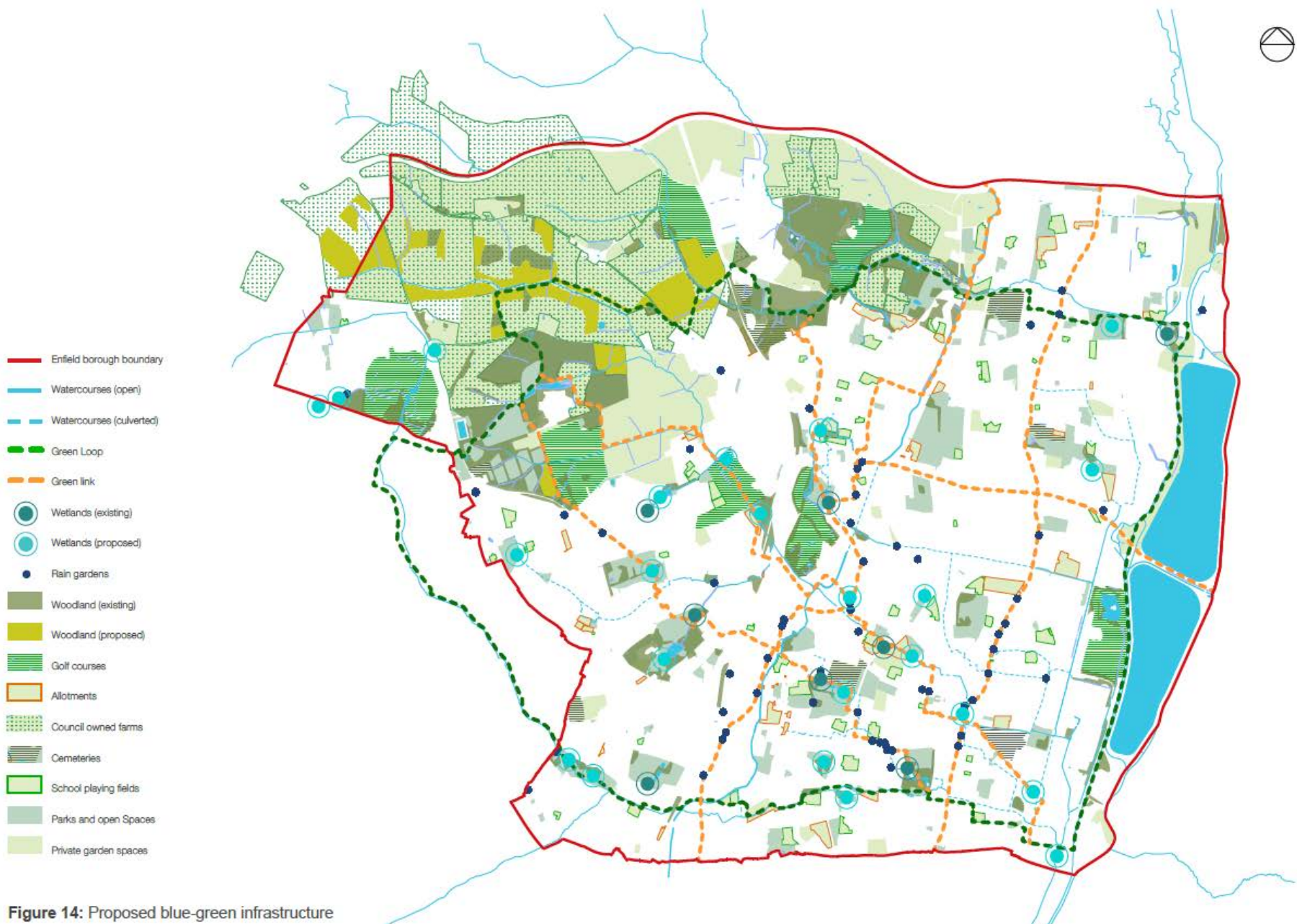


# Audit of blue & green assets

- Up-to-date assessment (surpluses/deficits) of parks, open spaces, play, waterspaces & green grid links
- Standards & targets (e.g. open space, urban greening & accessibility)
- Site surveys (e.g. SINC)s
- Review of BAP targets & priorities (habitats & species)
- Integrated mapping (LUC & Imperial College)

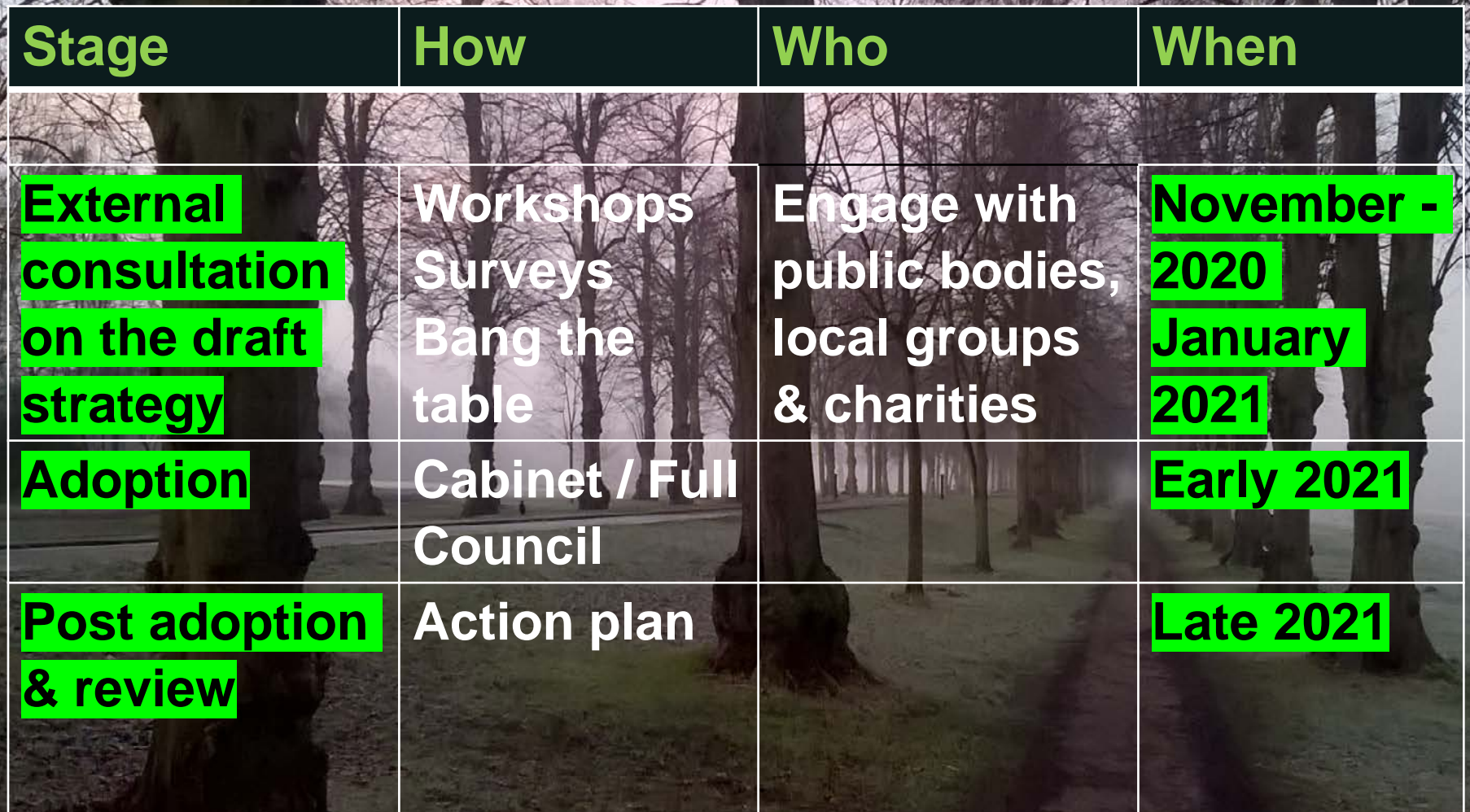






**Figure 14:** Proposed blue-green infrastructure





Stage	How	Who	When
External consultation on the draft strategy	Workshops Surveys Bang the table	Engage with public bodies, local groups & charities	November - 2020 January 2021
Adoption	Cabinet / Full Council		Early 2021
Post adoption & review	Action plan		Late 2021